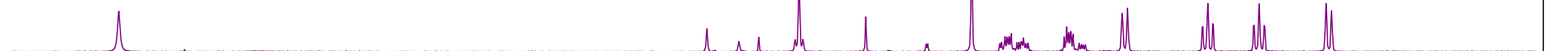
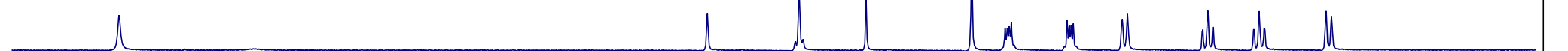


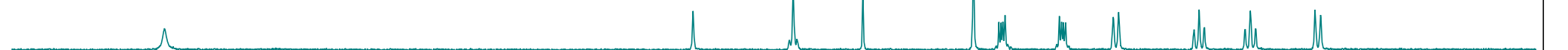
CTAg4_CD3CN_2-weeks+1-old_27C_2-days-later



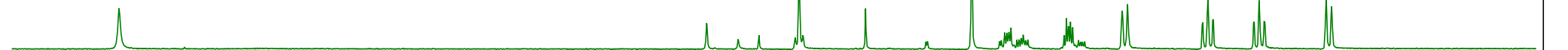
CTAg4_CD3CN_2-weeks+1-old_27C



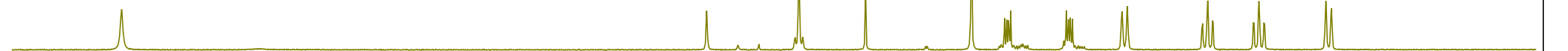
CTAg4_CD3CN_2-weeks+1-old_80C



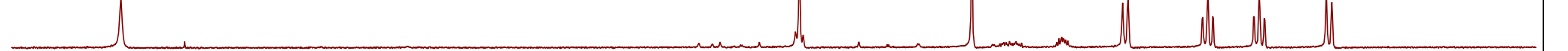
CTAg4_CD3CN_2-weeks+1-old



CTAg4_CD3CN



CTAg4_bis_CD3CN



0.5 10.0 9.5 9.0 8.5 8.0 7.5 7.0 6.5
f1 (ppm)